

# Coupling of oceans and land surfaces in the ECMWF Integrated Forecasting System: Sensitivity and impact of diurnal and synoptic variability on medium-range skill

Gianpaolo Balsamo, Kristian Mogensen, Sarah Keeley, Jean-Raymond Bidlot,  
 Souhail Boussetta, Emanuel Dutra, Nils Wedi  
 European Centre for Medium-Range Weather Forecasts, ECMWF, Reading, UK.

The benefits of coupling the ocean and land modeling components to the ECMWF medium-range forecasts are evaluated in a set of dedicated forecast sensitivity experiments. The ocean model (NEMO v3.4) in the ORCA025\_Z75 configuration includes 75 vertical layers and a ¼ degree horizontal resolution to represent the 3D ocean and includes a dynamical sea-ice model (LIM2) and a wave-model (EC-WAM). The land-model includes the HTESSEL 4-layer soil scheme and 1-layer snow scheme plus a mixed-layer lake model. In uncoupled sensitivity runs the diurnal cycle is ensured only by a skin layer parameterization while in coupled runs NEMO and HTESSEL are providing tendency updates interactively responding to the meteorology. A full year of daily medium-range forecast experiments are performed. These sensitivity runs highlight the day-5 forecast is largely affected by surface-atmosphere coupled processes and show how land and ocean are complementary in providing diurnal and synoptic variability contributing to enhanced forecast skill.

## Modelling components

The ECMWF Integrated Forecasting System (IFS Documentation, 2017) cycle 43r3 operational from the 11<sup>th</sup> of July 2017 is used. This employs a cubic octahedral reduced Gaussian grid (Wedi, 2014) that is used for operational ECMWF forecasts of the ensemble prediction system, labeled ENS (at 18 km resolution) and its bi-weekly Monthly extension (at 36 km resolution), a high-resolution system labeled HRES (9 km resolution) and a new seasonal forecasting system named SEAS5 (at 36 km resolution).

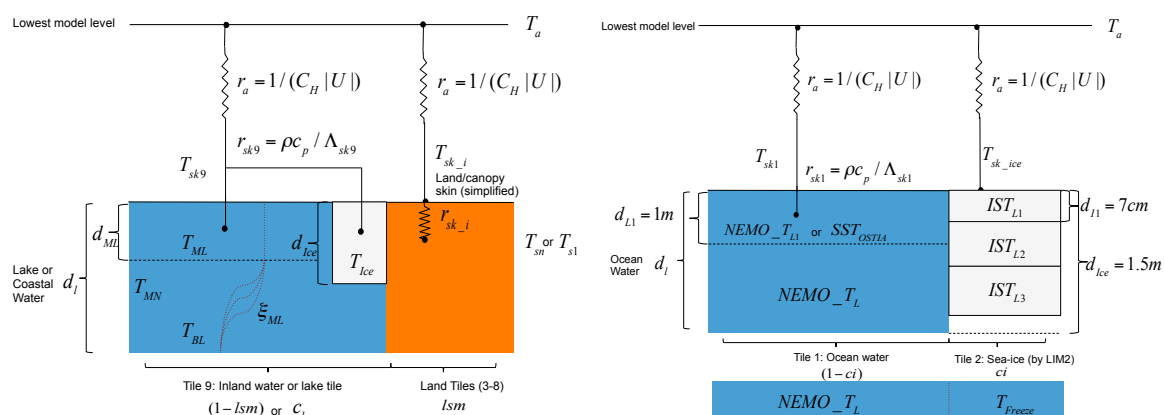


Figure 1: Schematic representation of the land-lake-ice coupling (left) and ocean-sea-ice (right) in the ECMWF Integrated Forecasting System (for details and symbols' legend see IFS documentation, Part-IV, 2017).

The NEMO v3.4 ocean model is used with horizontal resolution of 0.25 degree globally applied to all the atmospheric configurations listed above. The number of horizontal grid points in the

ocean (1472282) is fixed in all coupled forecasts configurations. The 75-layer vertical ocean column has fine scale discretization in the upper ocean (1m) able to represent the mixed-layer and the diurnal cycle variability. The LIM2 sea-ice model evolves the sea-ice cover and is able to respond to the changes to the atmosphere and ocean states e.g. melting of sea-ice during atmospheric warming in spring.

The land-surface model used in the ECMWF forecasting applications is HTESSEL, that stands for Hydrology Tiled ECMWF Scheme for Surface Exchanges over Land, and it include a 4-layer land-surface hydrology (Balsamo et al. 2009, Albergel et al. 2012), a 1-layer snow scheme (Dutra et al. 2010), a vegetation and natural carbon cycle scheme (Boussetta et al. 2013) and an embedded mixed-layer scheme for subgrid water bodies (Manrique-Suñén et al. 2013).

### **Initialization procedure**

The implementation of the ORCA025\_Z75 for the ENS system is dependent on having good ocean initial conditions available. A lot of work has gone into developing the new operational ocean reanalysis system 5 (OCEAN5, based on ORAP5 documented in Zuo et al. 2015). It uses a 3D-VAR assimilation (NEMOVAR, Mogensen et al. 2012) to produce daily initial conditions for the ORCA025\_Z75 configuration in both real time and behind real time mode. The sea surface temperature (SST) initialization of the atmospheric model is a combination of the NEMOVAR ocean model state and high resolution OSTIA SST product (Donlon et al., 2011). The ocean model can be considered to resolve eddy features within the tropical region and therefore the tropical SSTs are directly coupled to the atmosphere while for the extra-tropics a tendency update is adopted for the first week of the forecasts to make use of the high resolution features of satellite based SSTs products. The land surface initialization takes care of the soil moisture, soil temperature and snow depth via the Land Data Assimilation System at ECMWF (de Rosnay et al. 2014) that makes use of conventional ground-based observations (e.g. SYNOPs reports) and satellite dataset (e.g. IMS snow cover and ASCAT soil moisture).

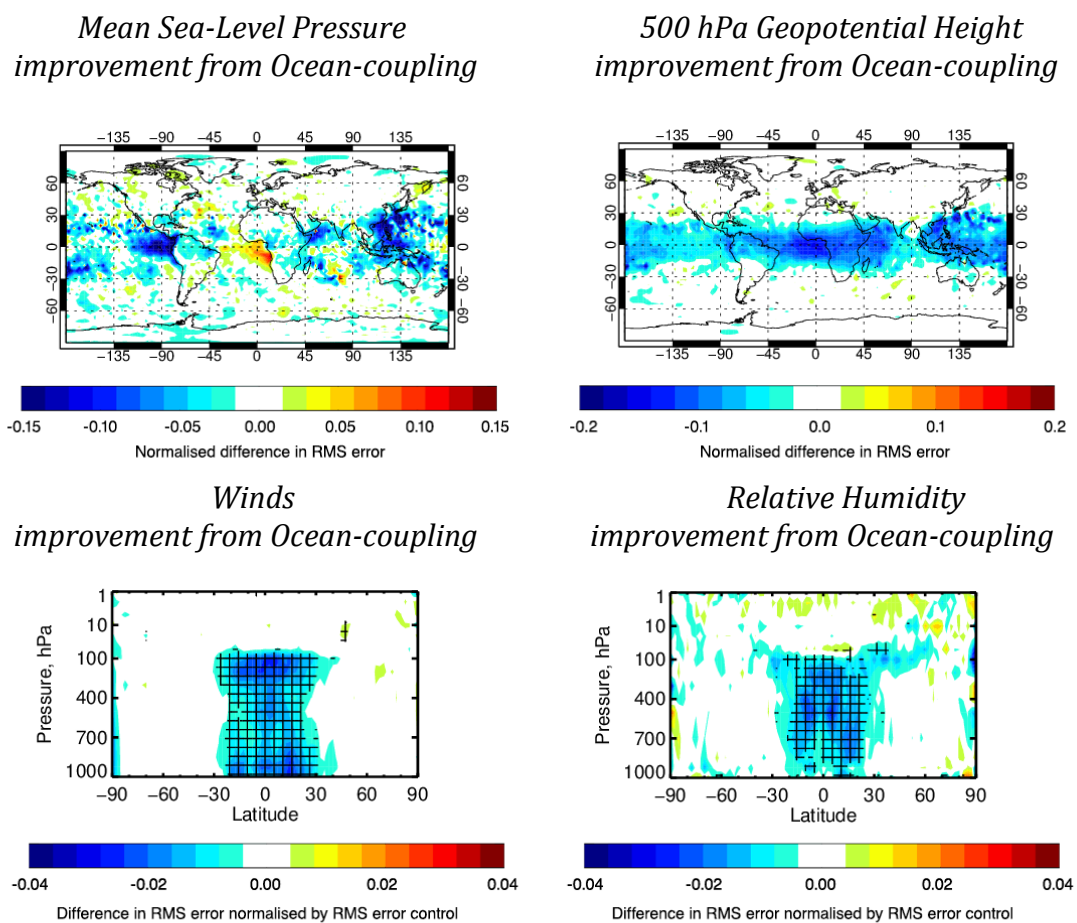
### **Coupling experiments**

In the IFS forecast integrations with the coupled system the information from/to ocean/atmosphere is exchanged with a coupling frequency of 1-hour while the land is updated at every time-step (varying from 7.5 minutes to 60 minutes in the different configurations). The ocean coupling includes feedbacks from wind waves to both the atmosphere and the ocean as described in Janssen et al. (2013). When the ocean model is uncoupled the waves are still active but the SST variations are represented by a warm-layer parameterization (Takaya et al. 2010). The cryosphere-atmosphere coupling adopts an explicit flux coupling with a stability control that mimics fully implicit formulations (Beljaars et al. 2017). The land surface tiling (Figure 1) ensures the coupling of ocean and sea-ice information to the atmosphere and permits fractional ocean/ice contributions to the energy fluxes. The coupling of the sea-ice cover information is passed from the LIM2 model to the IFS with an ice-to-ice coupling that updates the ice/sea fractions hourly. The thermodynamics of ice is computed separately in both IFS and LIM2 for practical reasons, and this will be the subject for research in the near future.

### **Forecast sensitivity and impact**

Medium-range performance has been evaluated in a set of forecasts experiments using the operational HRES analysis (9km) as verifying term. Forecasts impact is highlighted in Figure 2 for a selection of meteorological quantities.

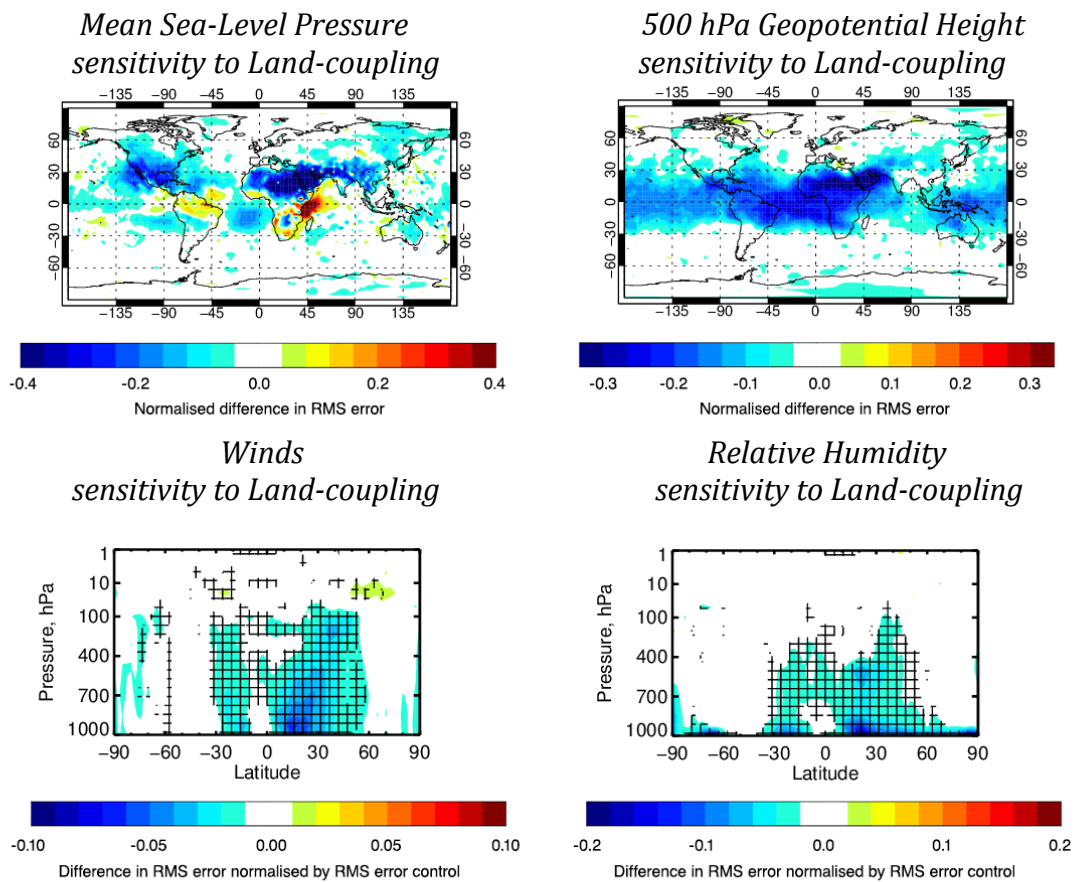
The capacity to forecast interactively ocean and sea-ice conditions following atmospheric conditions and the benefits are particularly evident in tropical surface pressure, tropospheric temperatures and humidity. Tropical winds confirm an impressive signal throughout the troposphere and the lower stratosphere, attributed to improved simulations of the Hadley and Walker cells. These improvements (blue colors) are quantified in 5 to 10 % error reduction of the day5 forecasts of mean sea level pressure and geopotential height at 500 hPa and smaller but significant improvements also in wind speed and relative humidity (of the order of 2 to 4 %). The average improvements evaluated over a full year of forecasts are also found in improved medium-range forecasts of extreme events, such as tropical cyclones (Mogensen et al. 2017), with an error reduction both in cyclones location and intensity particularly evident from day 5 to day 10 (not shown).



**Figure 2: Forecast improvements at Day+5 (blue colors indicating RMS error reduction) due to the HRES coupling of the NEMO+LIM2 Ocean and sea-ice model to the atmospheric model integrations, evaluated on one full year of TCo1279 daily forecasts (April 2015-March 2016) in 4 meteorological fields. Significance at 95% confidence level is reached for the shaded regions in the cross-sections (lower panels, shaded areas).**

Over land, where longer NWP operational experience is accumulated at ECMWF, the importance of representing the diurnal cycle amplitude and the synoptic variability in coupled land-atmosphere integration is illustrated by dedicated process-suppression experiments. The land surface model variables describing soil, snow, lakes evolution are neglected along the forecast and improvement bought by coupled land-atmosphere forecasts is measured (in analogous way as done for the ocean). This experiment allow to evaluate in analogous terms the impact of

diurnal and synoptic cycle variability brought by land surface coupling that is shown to be of high relevance for tropospheric temperatures with large impact also on circulation Figure 3.



**Figure 3: Forecast sensitivity at Day+5 (blue colors indicating RMS error reduction) due to the land surface coupling to the atmospheric model integrations, evaluated on one full year of TCo399 daily forecasts (June 2015-May 2016) in 4 meteorological fields. These are analogous scores to Figure 2.**

The land and ocean coupling determine a forecast skill improvement of similar magnitude at day-5 and the complementary aspects are evident both geographically and in vertical cross-sections showing the propagation of surface conditions throughout the atmosphere and up to 100 hPa pressure level extending the forecast sensitivity from 30S to 60N.

### Summary and outlook

The coupling of oceans and land surface models at ECMWF and the benefit on synoptic and diurnal cycle variability are estimated in sensitivity experiment. A more coupled Earth System model is shown to improve the forecast in the medium range. The ocean experiments are part of the current effort to introduce ocean-atmosphere coupling, making best use of the new NEMO 3D-ocean dynamics to predict ocean variability in sea surface temperature and energy-momentum exchanges. The land-coupling experiments are produced to measure the impact of land surface variability and allow a comparative assessment of the important of modeling these Earth surface components and provide evidence for handling atmospheric coupling in seamless manner.

The benefits usually attributed to surface initial conditions are present in both setups therefore the signal can be attributed to the modeling components. Advantages of ocean coupling are evident also for the medium-range and therefore led us to pursue a seamless implementation of

the NEMO model across all ECMWF forecasts that will be completed in 2017. Further research will explore the importance of ocean wave dynamics and sea-ice interactions and taking up future NEMO upgrades.

For the land surface the high impact of land-induced diurnal and synoptic variability supports further research into heat and water transfer across the snow and soil media and their dependency on land-use and associated properties. For those the use of remote sensing Earth Observations (Satellite-base skin temperature) is shown to have large potential supporting coupling parameters' estimation with impact anticipated for both medium and extended ranges (Orth et al. 2017).

Refinements to the coupling at the surface for both land (snow and soil increased vertical layer discretization) and in the ocean (mixed-layer, sea-ice, wave interaction) will aim at enhancing the realism of the diurnal cycle and the response to synoptic variability. A more integrated fully coupled land-ocean-atmosphere model with reduced systematic errors is a stepping-stone for coupled data assimilation that is expected to enhance further the medium-range forecast skill.

## References

Albergel, C. G. Balsamo, P. de Rosnay, J. Muñoz-Sabater, and S. Boussetta, 2012: A bare ground evaporation revision in the ECMWF land-surface scheme: evaluation of its impact using ground soil moisture and satellite microwave data, *Hydrol. Earth Syst. Sci.*, 16, 16, 3607-3620, doi:10.5194/hess-16-3607-2012. <http://www.hydrol-earth-syst-sci.net/16/3607/2012/hess-16-3607-2012.html>

Balsamo, G., P. Viterbo, A. Beljaars, B. van den Hurk, M. Hirschi, A.K. Betts, and K. Scipal, 2009: A Revised Hydrology for the ECMWF Model: Verification from Field Site to Terrestrial Water Storage and Impact in the Integrated Forecast System. *J. Hydrometeor.*, 10, 623-643, also available as ECMWF Tech. memo. 563

Beljaars, A., Dutra, E., Balsamo, G., and Lemarié, F., 2017: On the numerical stability of surface-atmosphere coupling in weather and climate models, *Geosci. Model Dev.*, 10, 977-989, doi:10.5194/gmd-10-977-2017. <http://www.geosci-model-dev.net/10/977/2017/gmd-10-977-2017.html>

Boussetta, S., G. Balsamo, A. Beljaars, A. Agusti-Panareda, J.-C. Calvet, C. Jacobs, B. van den Hurk, P. Viterbo, S. Lafont, E. Dutra, L. Jarlan, M. Balzarolo, D. Papale, G. van der Werf, 2013: Natural land carbon dioxide exchanges in the ECMWF Integrated Forecasting System: Implementation and offline validation, *J. Geophys. Res.*, 118, 5923–5946, DOI: 10.1002/jgrd.50488, also available as ECMWF Tech. memo. 675.

E. Dutra, G. Balsamo, P. Viterbo, P.M.A. Miranda, A. Beljaars, C. Schär, K. Elder, 2010: An improved snow scheme for the ECMWF land surface model: description and offline validation. *J. Hydrometeor.* 11, 899-916. doi: 10.1175/2010JHM1249.1., also available as ECMWF Tech. Memo. 607.

ECMWF Integrated Forecasting System Documentation, Cycle 43r3, 2017 <https://www.ecmwf.int/en/forecasts/documentation-and-support/changes-ecmwf-model/ifs-documentation>

Janssen P, Brevivik O, Mogensen K, Vitart F, Balsaseda MA, Bidlot J-R, Keeley S, Leutcher M, Magnusson L, Molteni F., 2013: Air-sea interaction and surface waves. ECMWF Tech Memo (712).

Manrique Suñén, A., A. Nordbo, G. Balsamo, A. Beljaars, I. Mammarella, 2013: Representing land surface heterogeneity with the tiling method: merits and limitations in presence of large contrast, *J. Hydromet.* 14, 850–867. doi: <http://dx.doi.org/10.1175/JHM-D-12-0108.1>, also available as ECMWF Tech. Memo. 683.

Mogensen, K. S., L. Magnusson, and J.-R. Bidlot (2017), Tropical cyclone sensitivity to ocean coupling in the ECMWF coupled model, *J. Geophys. Res. Oceans*, 122, doi:10.1002/2017JC012753. Also available as ECMWF Tech. Memo 794, <https://www.ecmwf.int/sites/default/files/elibrary/2017/16980-tropical-cyclone-sensitivity-ocean-coupling.pdf>

Mogensen, K. M. Alonso-Balsameda, A. Weaver, 2012: The NEMOVAR ocean data assimilation system as implemented in the ECMWF ocean analysis for System 4. ECMWF Tech Memo. 668, <https://www.ecmwf.int/sites/default/files/elibrary/2012/11174-nemovar-ocean-data-assimilation-system-implemented-ecmwf-ocean-analysis-system-4.pdf>

NEMO Nucleus for European Modelling of the Ocean, online documentation <https://www.nemo-ocean.eu/doc/>

Orth, R., Dutra, E., Trigo, I. F., and Balsamo, G., 2017: Advancing land surface model development with satellite-based Earth observations, *Hydrol. Earth Syst. Sci.*, 21, 2483-2495, doi:10.5194/hess-21-2483-2017. , <http://www.hydrol-earth-syst-sci.net/21/2483/2017/hess-21-2483-2017.html>

de Rosnay P., G. Balsamo, C. Albergel J. Muñoz-Sabater and L. Isaksen, 2014: Initialisation of land surface variables for Numerical Weather Prediction, *Surveys in Geophysics*, 35(3), pp 607-621. doi: 10.1007/s10712-012-9207-x

Donlon, C. J., M. Martin, J. D. Stark, J. Roberts-Jones, E. Fiedler and W. Wimmer, 2011. The Operational Sea Surface Temperature and Sea Ice analysis (OSTIA). *Remote Sensing of the Environment*. doi: 10.1016/j.rse.2010.10.017 2011.

Takaya, Y., J.-R. Bidlot, A. C. M. Beljaars, and P. A. E. M. Janssen (2010), Refinements to a prognostic scheme of skin sea surface temperature, *J. Geophys. Res.*, 115, C06009, doi:10.1029/2009JC005985.

Wedi N.P., 2014: Increasing the horizontal resolution resolution in numerical weather prediction and climate simulations: illusion or panacea?" *Phil. Trans. R.Soc.A*, 372, doi: 10.1098/rsta.2013.0289.

Zuo H., M. A. Balsameda, K. Mogensen, 2015: The new eddy-permitting ORAP5 ocean reanalysis: description, evaluation and uncertainties in climate signals, *Clim. Dyn.*, 10.1007/s00382-015-2675-1.